



Protecting Your Property From Wildlife Damage

The beauty of Florida draws many to live within the heart, or along the edge of natural areas. Many have seasonal camps or year-round residences in or near these rural sites. Those that live in these areas know that the possibility of attracting the “wild” onto their personal property does not only mean the bird at the bird feeder, but it may also include skunks, raccoons, opossum, bobcat, bear and even Florida panthers. These animals have the ability to damage property, and may even injure or kill domesticated animals such as pets and livestock.

Unlike wild animals, most domesticated animals do not have the skills to protect themselves. Thousands of years of breeding have made domestic animals dependent on people for protection. There are simple and cost effective ways to avoid the loss of pets and livestock to natural predators. These methods will also keep your family and neighbors safe.

Keep Your Pets Safe

Cats and dogs are easy prey for larger predators. Keep your pets indoors or secure them in a covered run.

If you allow your pets to roam on your property, keep in mind that you are risking their lives - just as city dwellers take a risk in letting their pets roam near a busy street.

It is illegal to allow your pet to run, unattended and off leash within Collier County and on Big Cypress National Preserve lands.

Do Not Feed Wildlife

Feeding wildlife such as deer, opossums, or raccoons only attracts predators to your home and creates a safety risk.

Make sure that food set out for pets, livestock, or birds is accessible only to the animals that you are trying to feed.

Fence in vegetable and fruit gardens that might attract wildlife.

Landscape your yard with plants that deer do not like to eat.

Build Livestock Enclosures

The best protection measure is to secure livestock in fully enclosed barns, pens and sheds from dusk to dawn, the typical time when predators are seeking prey. Openings, such as windows, doors, or large gaps, are attractants and might provide access for highly curious animals.

Be sure to place all livestock enclosures away from any trees or brush that predators might climb or hide within.

Protect Vulnerable Animals

Many wild animals are attracted to the smell of blood. Keep injured animals, or livestock nearing and following birth, in fully enclosed structures.

Immediately remove and destroy afterbirth, carcasses, and other animal by-products from areas near livestock enclosures or homes.

Install Frightening Devices

Many predators depend on surprise to capture prey.

Installing either motion or timer-activated outdoor lighting around your home and animal enclosures may keep predators away.

You might also try loud noises, sprinklers, or other frightening devices, such as those used to keep birds out of agricultural fields.



Secure livestock and pets in night time enclosures.

Small Load

Livestock Enclosure Assembly

Smaller night time enclosure for stock such as chickens, goats or sheep. Houses fewer animals.

Tools List

1. Bolt Cutters
2. Sledge Hammer
3. Pliers
4. Wire Cutters
5. Drill with 1/4" bit

Materials List

- 1) One 10' x 20' Moto-Shade™ Multi-Purpose Canopy kit or equivalent
- 2) One 6' by 10' prefabricated chain link panel with a door. Be sure there is a heavy latch
- 3) Three rolls of 50' x 6' 11 1/2 gauge chain link fencing
- 4) One 100' roll of 9 gauge galvanized tension wire
- 5) Six 4' t-posts
- 6) Twelve 2 1/2" hose clamps
- 7) One 5 lbs. spool of rebar wire
- 8) Six 1 3/8" x 1 3/8" panel clamps
- 9) Ten eyebolt/turnbuckle units, each unit consisting of: one 1/4" x 4" eyebolt; one 1/4" turnbuckle; two 1/4" nuts; two 1/4" washers; one 1/8" u-clamp

Instructions

- 1) Select a level area 10 feet by 20 feet for assembly and placement of enclosure.

- 2) Assemble the roof frame of the multi-purpose canopy kit according to the manufacturer's instructions.

- 3) Measure half of the length of the gable ends of the roof frame and drill 1/4" holes for the eyebolts.

- 4) Insert eyebolts, with a washer on each side of the pole, making sure the "eye" of the eyebolt is on the inside of the frame, and secure it with a bolt.

- 5) Attach the turnbuckle to the eyebolt by twisting the eye open with a pliers, slipping the turnbuckle on, and twisting the eye closed.

- 6) Attached the tension wire to the turnbuckle using the u-clamp.

- 7) Once the eyebolt/turnbuckle is in place at each end and connected to the tension wire tighten the turnbuckles until the wire is taut.

- 8) Lay the chain link across the length of the roof on each side and attach it to the frame and tension wires with the rebar tie wire.

- 9) Loosely attach a 10' length of chain link across the front and rear gable ends and use the bolt cutters to cut it to size, leaving enough wire to bend down and close any open links. Remove the excess.

- 10) Attach the plastic sun-shade or tarp.

- 11) Lift the roof and insert the legs. This works best with six people, one at each leg.

- 12) Using the sledgehammer, pound the six 4-foot t-posts into the ground right next to the frame legs and use the hose clamps to strap them tightly together.

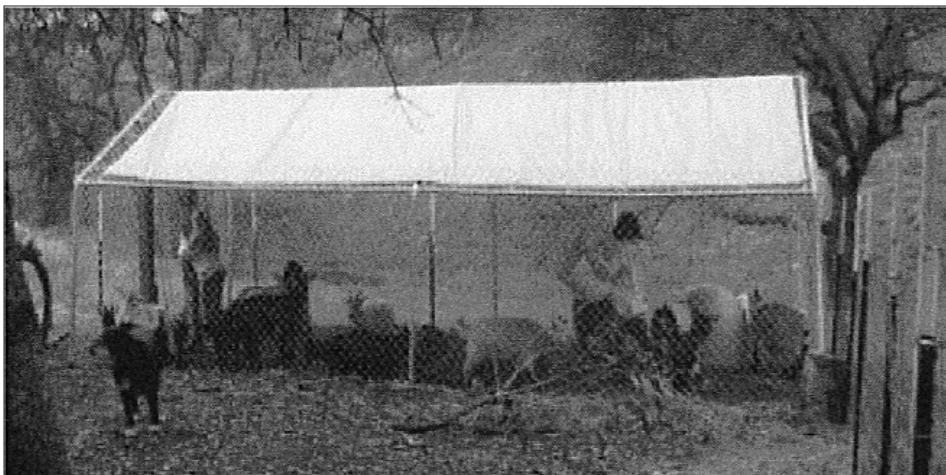
- 13) Drill 1/4" holes at the bottom of each leg and install the eyebolt/turnbuckle units and tension wire. On the two rear-most legs you will have to drill two holes and install two eyebolt/turnbuckle units, one connected to the side tension wire, another for the rear tension wire about an inch above the first.

- 14) Make sure the eyebolt/turnbuckle units and tension wires are attached and tightened at the bottom of both sides and at the top and bottom of the rear.

- 15) Begin attaching the chain link to the multi-purpose canopy kit frame, keeping the top of the chain link even with the roof frame. Start at the front corner and work toward the back, then around the back and toward the front again. Use the bolt cutters to trim the bottom of the chain link to fit the terrain and bend around the corners. Note that each roll end with an "open" link. This can be removed by twisting it and pulling it out the top, then place the beginning of the new roll so it overlaps the end of the old roll and reinsert the "open" link to splice the two rolls together.

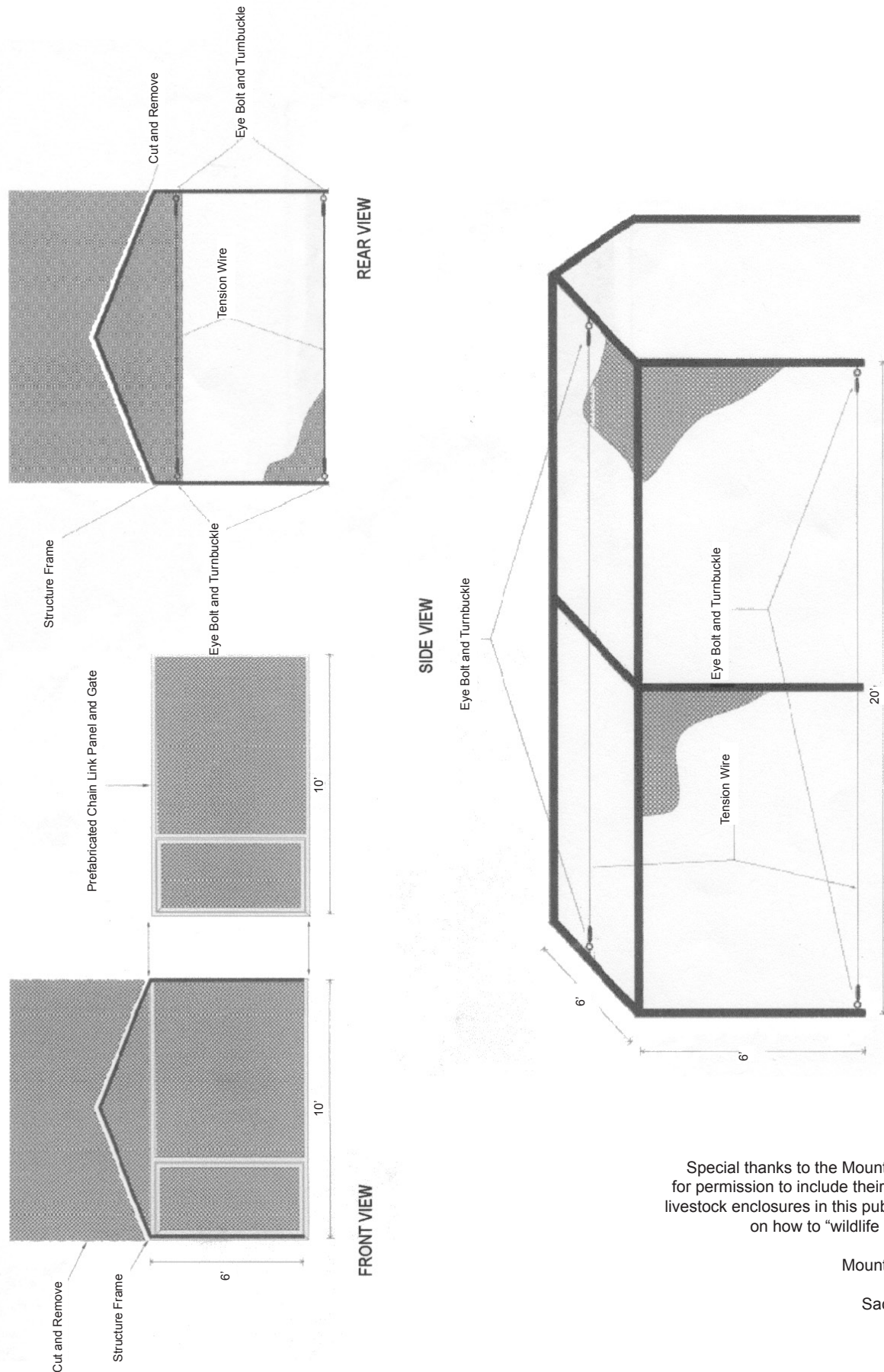
- 16) Finally attach the 10' by 6' prefabricated chain link panel and gate to the front using the panel clamps. Look over the entire structure and make sure the chain link is securely attached in all places and use more rebar tie wire where necessary.

- 17) If the ground is not level where you have placed the enclosure, or if you intend to move it frequently, you may secure the chain link across the floor of the enclosure. Attach it to the sides of the enclosure to prevent domestic animals from escaping and to prevent digging animals from entering.



Small Load Livestock Enclosure

Check with county permitting offices for permit requirements 239-403-2400



Special thanks to the Mountain Lion Foundation for permission to include their plans and design of livestock enclosures in this publication, and for text on how to "wildlife proof" your property.

Mountain Lion Foundation
P. O. Box 1896
Sacramento, CA 95812

916-442-2666

Large Load

Livestock Enclosure Assembly

A night enclosure for stock such as goats, sheep, etc. Larger capacity for more animal. Estimated cost of materials is approximately \$1000.00.

Materials List

5 - 4 x 4 x 8 Pressure Treated (PT)

4 - 4 x 4 x 12 PT

37 - 2 x 4 x 8 PT

12 - 2 x 6 x 10 PT

16 - 5/4 x 3 x 8 PT

1 - 2 x 6 x 16 PT

3 - 4 x 8 sheet of T 1-11 Panel

6 - 1 x 4 resawn trim

12 - Piers

12 - Bags of 90 lbs. premix concrete

8 - 26" x 10' Galvanized Roofing Panels

6 - 6' PT closure straps

1 - 62" x 50' 11.5 gauge chain link fence

1 - 36" x 72" prefab walkin gate

2 - 5 lbs. box of 16 d galvanized nails

6 - 1 lbs special roofing nails

12 - Simpson post base

12 - Simpson post cap

4 - 36" Simpson Straps

2 - 8' drip cap \$2.00

3 - 2" x 25' alum. roll

Staples

Gate hinges

Gate latch

Typical Notes

1) Lower 6' portion of enclosure wrapped in 11.5 gauge chain link

2) Upper portion wrapped in T 1-11 siding

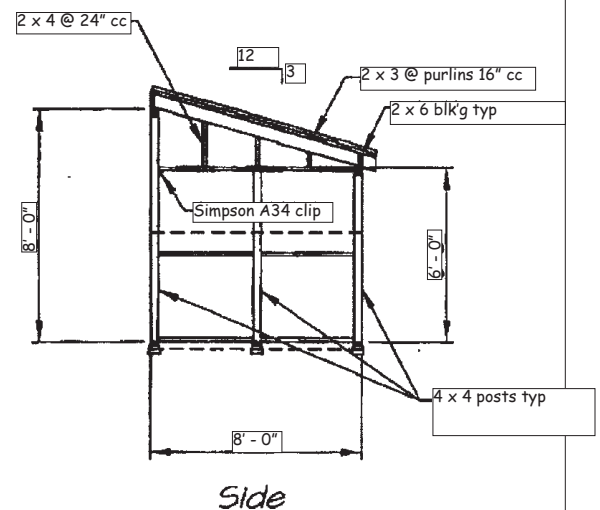
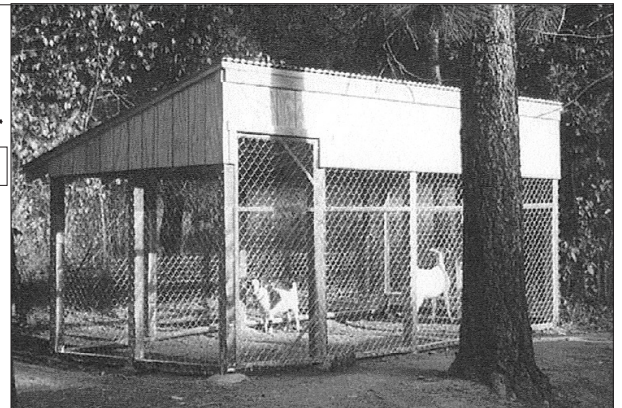
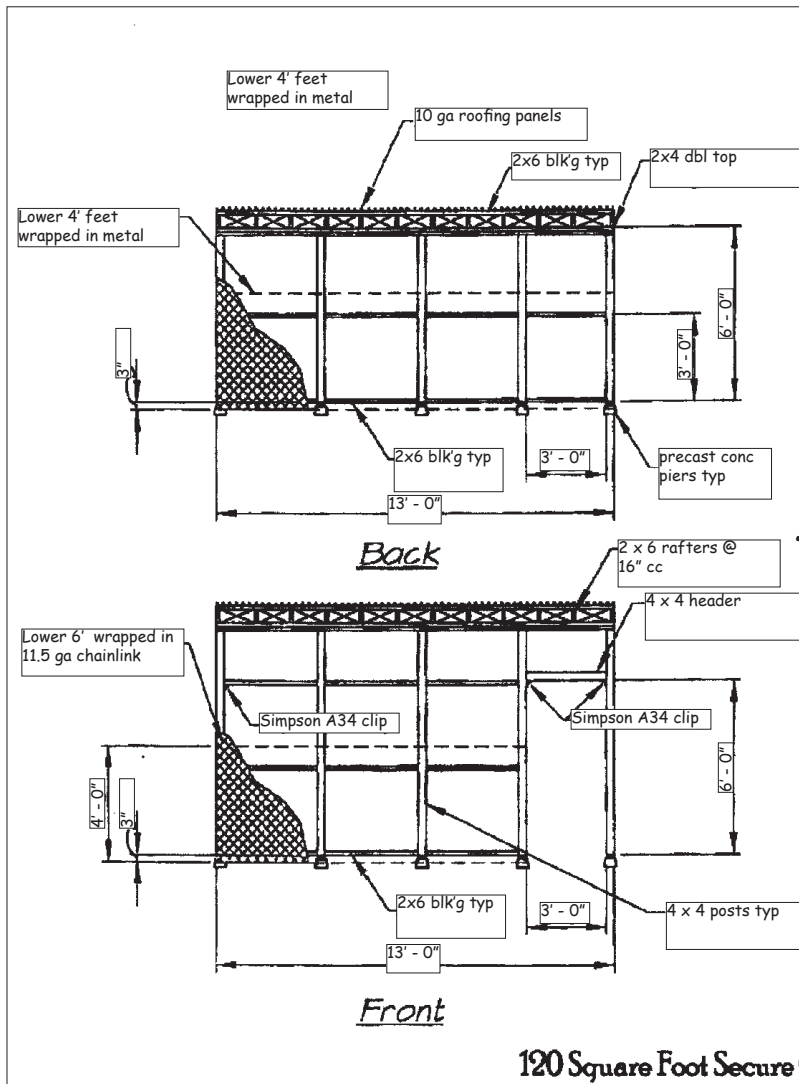
3) All wood pressure treated

4) All wood below 4' wrapped in metal, unless chain link installed inside, to prevent domestic animals from chewing on wood.

5) All 4 x 4s to have Simpson SP2 and SP5 stud plate ties.

Large Load Livestock Enclosure

Check with county permitting offices for permit requirements 239-403-2400



120 Square Foot Secure Goat Enclosure